

*Pietist Schoolman Travel presents its next European tour*

# Christianity and German Culture

June 2023

*\$1,900 plus airfare*

Eager to travel again after the COVID-19 pandemic? Want to take advantage of a strong dollar? Interested in learning about the relationship between Christianity and Western culture in one of Europe's largest countries?

Join us in June 2023 for a week-long motorcoach tour of Germany, as we survey nearly two thousand years worth of political and religious history in the heart of Europe. We'll meet Constantine in Trier and Charlemagne in Aachen, marvel at the Gothic cathedral of Cologne, and visit the key sites of Martin Luther's reformation. We'll wrap up with two days in Berlin, where we'll see Germany's central role in modern history — and how Germans today grapple with the memory of National Socialism, the Holocaust, and the Cold War.

## Your Tour Leaders

**Chris Gehrz** is professor of history at Bethel University in St. Paul, Minnesota, where he came in 2003 after completing his doctorate at Yale University. A past winner of Bethel's Faculty Excellence Award for Teaching, Chris' courses include *World War I*, *World War II*, *The Cold War*, *Modern Europe*, and *Christianity and Western Culture*. He is the author or editor of five books, including an acclaimed spiritual biography of the controversial pilot [Charles A. Lindbergh](#).



**Sam Mulberry** is assistant professor of history at his alma mater, Bethel University, where he directs the Academic Enrichment and Support Center and coordinates the *Christianity and Western Culture* course with Chris. Another award-winning member of Bethel's faculty, Sam spent his most recent sabbatical producing [Why We Teach](#), a feature-length documentary on teaching. He also produces numerous podcasts on the [Channel 3900 network](#).

## Likely Itinerary

*(B: breakfast included; S: supper included)*

*Arrive by evening of Monday, June 12, 2023 ⇨ Frankfurt am Main*

It's up to you [to arrange your flight](#) to Frankfurt, but tonight's hotel is included in the cost of the trip. Our tour won't get going in earnest until tomorrow morning, but you're welcome to join Chris and Sam for a brief evening tour of the city that served as the birthplace of both German democracy and the Christian renewal movement known as Pietism.

*Tuesday, June 13, 2023 ⇨ Trier*

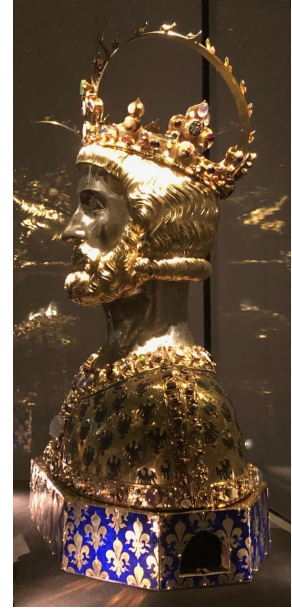
Our motorcoach tour starts with a scenic drive along the Rhine and Mosel rivers, taking us past vineyards and castles to the southwestern town of Trier. In the 4th century AD, Trier was known as "The Rome of the North," the capital of the Emperor Constantine at the time he ended the persecution of Christianity. We'll see the city's surviving Roman gate (*below*), basilica, amphitheater, and baths, plus the oldest church in Germany. *(B)*





*Wednesday, June 14, 2023 ✧ Aachen and Cologne*

Today we turn our attention to the Middle Ages, starting with that era's first great ruler: Charlemagne (*right*), whose capital, Aachen, is home to a stunning Carolingian cathedral and a remarkable collection of artifacts. We'll stop for the night in the bustling city of Cologne, a former Roman colony whose Gothic cathedral (the largest in Germany) was a popular destination for medieval pilgrims. (*B*)



*Thursday, June 15, 2023 ✧ Eisenach and Erfurt*

As we drive east, to the state of Thuringia, we'll begin two days mostly dedicated to the Protestant Reformation. In the charming town of Eisenach, we'll visit the medieval castle known as the Wartburg (*below*), where Martin Luther translated the New Testament into German. Then we'll spend the night in Erfurt, where Luther had earlier left law school to become an Augustinian monk. (*B, S*)



*Friday, June 16, 2023 ⇨ Buchenwald and Wittenberg*

We'll end the Reformation segment of our tour in Wittenberg, the Saxon city where Luther served as a pastor, taught at the university, and wrote most of his bestselling works. We'll see the churches where he posted his 95 Theses and preached thousands of sermons and explore the museum housed in the monastery that became the Luther family home. But on the way to Wittenberg, we'll briefly jump ahead in our story and walk the sobering grounds of Buchenwald, one of the most infamous concentration camps in Nazi Germany. (B)

*Saturday, June 17, 2023 ⇨ Berlin*

Our final destination is Berlin, built into an Enlightenment center by the Prussian monarch Frederick the Great and arguably the world's most important city in the 20th century. To get you oriented, we'll offer walking tours of central sites like the Reichstag, Brandenburg Gate, Unter den Linden, Museum Island, and the Memorial to the Murdered Jews of Europe (below). (B)





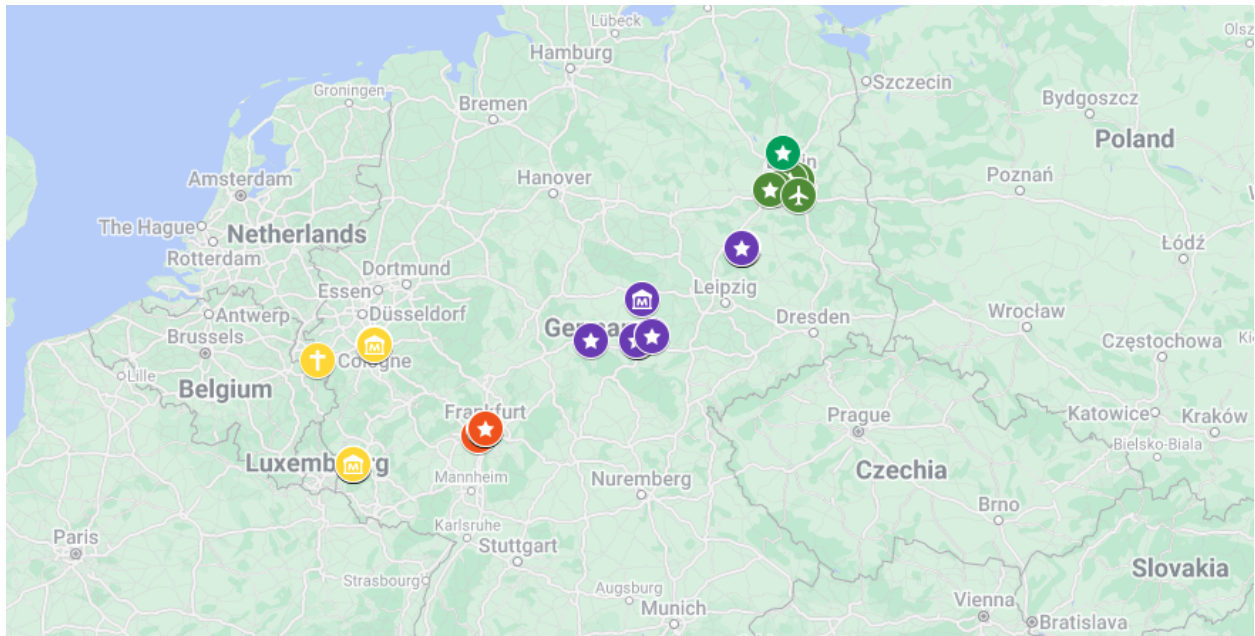
*Sunday, June 18, 2023 ✧ Berlin*

Join us for morning worship in the city's Protestant cathedral, then spend the afternoon exploring museums and sites in the city. Or use your all-day public transit ticket to head to neighboring destinations like the Sachsenhausen memorial in Oranienburg, the Wannsee house where the Final Solution was planned, or Cecilienhof in Potsdam, site of the peace conference that followed WWII. We'll conclude the tour by regathering for a final group supper. (B, S)

*Depart morning of Monday, June 19, 2023*

Time to say farewell, as some fly home to the States and others continue their travels in Europe. It's 4-5 hours by train from Berlin to Warsaw, Prague, or Munich; by plane, it's 2 hours or less to Rome, Paris, Amsterdam, or Stockholm. (B)

[Click here](#) to learn more about our travel philosophy and guides. Or click the map below to preview likely destinations.



**pietistschoolman.com/travel**

## Terms and Conditions

### Price: What Is (and Isn't) Included

This tour is priced (\$1,900) based on an expectation of 20-24 paying participants. Price subject to change in the event of significant currency fluctuation (€1>\$1.15).

What's Included	What's Not Included
Motorcoach travel around Germany; unlimited public transit travel in Cologne and Berlin (Sat/Sun)	<a href="#">Airfare</a> and transit to/from airports; taxis/Uber/Lyft; <a href="#">travel insurance</a> ; <a href="#">passport</a> application/renewal; any required <a href="#">COVID</a> vaccinations or tests
Double-occupancy accommodations for seven nights in three-star tourist hotels (four-star also possible one or two nights)	Supplement for travelers who want a single room in hotels (\$500); portage; any additional stays relative to COVID quarantine or isolation
Breakfast every morning, plus two suppers together at local restaurants	Lunches, most suppers, and snacks; alcoholic beverages at group meals
Admission to all museums and other sites that we'll visit as a group	Additional tourism and travel beyond that listed in the itinerary
Pre-trip classes with Chris and Sam, and guided bus and walking tours throughout the trip itself; trip reading packet	Travel guides — we recommend <a href="#">Rick Steves' for Germany</a>

### Deposit, Payments, Cancellations & Refunds

- To be considered for the trip, each prospective participant must complete and sign the application at the end of this brochure and pay a deposit of \$500. (We're planning to take up to 24 people along, but will also maintain a wait list.) The deposit is refundable until February 1, 2023, when the balance of each payment is due.
- Make all payments [by check](#) made out to **Pietist Schoolman Travel LLC**, sent care of Chris Gehrz, 1284 Draper Ave., Roseville, MN 55113.

- Chris must receive all cancellation and refund requests [in writing](#). Cancellations received between February 1, 2023 and May 1, 2023 will result in a \$500 deduction from the refund. After May 1, 2023, we can't guarantee more than a 50% refund for any cancellation.

## **Terms and Conditions**

By signing and returning the trip application and paying the trip deposit, each participant agrees to the terms and conditions stated below:

### Documentation

U.S. citizens require [a valid passport](#). The traveler assumes complete and full responsibility for, and hereby releases Pietist Schoolman Travel LLC from, any duty of checking and verifying any and all passports, visa, or other entry requirements for each destination, and all safety and security conditions during the proposed travel. As passport policies can change, please check with the U.S. State Department for all overseas travel requirements, including expiration date requirements [for travel in Europe](#).

### COVID

Likewise, the traveler assumes complete and full responsibility for abiding by all public health regulations related to COVID-19, both en route to and from Europe and within Germany itself (e.g., meeting vaccination or testing requirements; wearing appropriate masks as required; undergoing quarantine procedures as needed). The traveler releases Pietist Schoolman Travel LLC from any responsibility for confirming their vaccination/testing status and entirely assumes the risk of needing to pay for any additional accommodations or travel related to a COVID-related period of isolation or quarantine.

### Disclaimer

Pietist Schoolman Travel LLC, its Owners, Outfitters, Agents, and Employees give notice that they act only as the agent for the owners, contractors, and suppliers providing means of transportation and/or all other related travel services and assume no responsibility whatsoever for injury, loss or damage to person or property in connection with any service resulting directly from: acts of God, detention, annoyance, delays, expenses arising from quarantine, strikes, thefts, pilferage, force majeure, failure of any means of conveyance to arrive or depart as scheduled, civil disturbances, terrorism, government restrictions or regulations, and discrepancies or changes in transit or hotel services. Changes in the itinerary may be made where deemed advisable by the tour leader. On payment of deposit to Pietist Schoolman Travel LLC, the participant therefore agrees to be bound by the above recited terms and conditions. Participants acknowledge there are risks in travel and the activities of this tour, and release Pietist Schoolman Travel LLC and the tour leaders from any liability.

## Frequently Asked Questions

### **Why isn't airfare included in the trip price?**

We've left it out in order to allow all participants the flexibility to choose their airline and points of embarkation, to use frequent flyer miles, and to have the option of extending travel on either end of the tour. We'll let you know the details of our flights to/from Minneapolis-St. Paul, in case you'd like to travel with us. But our only expectation is that you are in the lobby of our Frankfurt hotel at 8am on June 13th, ready to get on the motorcoach for the first leg of our tour.

Please do not pay for any final flight reservations until receiving confirmation from us that the trip is adequately enrolled and officially approved (hopefully by mid-January 2023). Pietist Schoolman Travel LLC is not responsible for flight payments made prematurely.

### **Should we buy travel insurance?**

We recommend it, but will leave that up to you as well. On previous trips with college students, we've used [iNext](#), which offers supplemental and comprehensive plans at different levels for individuals as well as groups. (We offer this as a recommendation, but assume no responsibility for these arrangements.) In any event, be sure to bring medical insurance and contact information with you. We'll provide a detailed itinerary that you can leave with an emergency contact back home, along with a copy of your passport's first page.

### **How much physical activity should we expect?**

Within cities that we visit, you should generally expect to walk at least two or three miles per day, but we'll take multiple breaks on walking tours and try to make it easy for people to opt in and out at different points. We're using a motorcoach in part to keep you from having to carry around luggage too often, but you are responsible for moving your own bags. (We recommend no more than one suitcase and one carry-on; like airfare itself, any additional baggage fees are your responsibility.) We will always try to pick hotels and subway stops with elevators, but accessibility is sometimes an issue in European travel.



### **How much free time will we have?**

As a general rule, expect more time to yourself in large cities (Frankfurt, Cologne, Berlin) and less in the smaller towns. But for every destination, we'll try to arrange a mix of time together (e.g., motorcoach travel, walking tours, group meals) and time apart for seeing sites, going shopping, eating out, visiting friends, etc. We'll always let you know where we're headed during our free time, in case you want to join us and dive more deeply into German history.

### **Can we pay electronically?**

We're a small company that runs no more than one tour per year, so it's much easier and less costly to conduct our relative handful of transactions by check. But if you don't have a checking account, [contact Chris](#) to arrange electronic payment.

### **Are single travelers welcome to join the trip?**

Absolutely! Just let us know on the application if you'd prefer to share your hotel room with another participant or pay the supplement (\$500) to reserve a room to yourself.

### **Do I have to be a Christian to go on the trip?**

No. Chris and Sam are both Christian historians who teach at a Christian university, and we'll pay significant attention to the complicated history of Christianity in Germany. But the trip is open to travelers of any (or no) faith.

### **How can we learn more about German history before we leave?**

We'll provide numerous resources — for example:

- The opportunity to take three pre-trip classes from us online in spring 2023
- A list of suggested books and films
- A reading packet with primary sources

Any other questions? Just email Chris at [chris@pietistschoolman.com](mailto:chris@pietistschoolman.com)



# Trip Application

To apply for **Christianity and German Culture** (June 2023), print and complete this application and return it with your deposit (\$500 per person) to Chris Gehrz, 1284 Draper Ave., Roseville, MN 55113. (Check made out to **Pietist Schoolman Travel LLC.**)

## Traveler One

First Name: \_\_\_\_\_ Middle: \_\_\_\_\_ Last: \_\_\_\_\_

Mailing Address: \_\_\_\_\_

Email Address: \_\_\_\_\_ Cell Phone #: \_\_\_\_\_

Date of Birth: \_\_\_\_\_ Passport # (can add later): \_\_\_\_\_

Room preference: \_\_\_\_ Shared room \_\_\_\_ Single (\$500 supplement)

Dietary requirements? (vegetarian, vegan, allergies, etc.): \_\_\_\_\_

## Traveler Two (if sharing a room with Traveler One)

First Name: \_\_\_\_\_ Middle: \_\_\_\_\_ Last: \_\_\_\_\_

Mailing Address: \_\_\_\_\_

Email Address: \_\_\_\_\_ Cell Phone #: \_\_\_\_\_

Date of Birth: \_\_\_\_\_ Passport # (can add later): \_\_\_\_\_

Shared room preference: \_\_\_\_ 1 bed \_\_\_\_ 2 beds

Dietary requirements? (vegetarian, vegan, allergies, etc.): \_\_\_\_\_

If you would like to take your children or grandchildren along on the trip, please contact Chris ([chris@pietistschoolman.com](mailto:chris@pietistschoolman.com)) before completing this form.

## Signature(s)

I have read and understood the trip itinerary, price, terms, and conditions, including the liability release, and agree to all. I am enclosing an initial deposit with this application.

Signed \_\_\_\_\_ Date \_\_\_\_\_

Signed \_\_\_\_\_ Date \_\_\_\_\_